

PLACES 2010 FIXED PRICE HOUSE+LAND PACKAGES

East

Cranbourne North
MELWAY MAP 130 G9



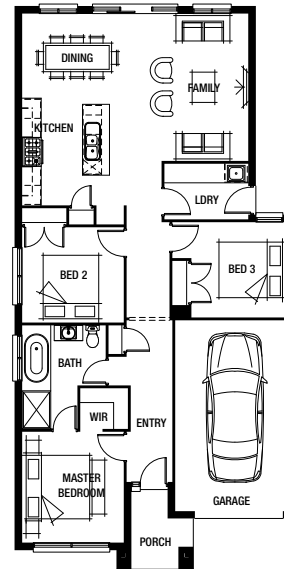
rosewood 16

3 1 1



\$337,431*

Includes Over **\$49,000[†]** worth of luxury upgrades & inclusions



ALSO INCLUDED: ✓ All site costs!¹ ✓ All estate covenants! ✓ Floor coverings! ✓ Evaporative cooling! ✓ And much more!

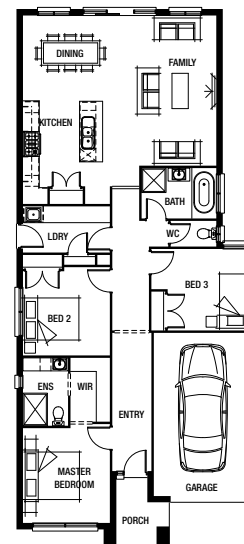
westmead 17

3 2 1



\$345,431*

Includes Over **\$49,000[†]** worth of luxury upgrades & inclusions



ALSO INCLUDED: ✓ All site costs!¹ ✓ All estate covenants! ✓ Floor coverings! ✓ Evaporative cooling! ✓ And much more!

Damian Morabito | 03 9706 3776

Travis McIver | 03 5991 4856

1300 PLACES (1300 752 237) | www.placeshomes.com.au

places
Building quality you can afford

* Package prices are based on standard home, standard facade and builder's preferred siting. Pricing may vary due to actual land availability. All Fixed Price House & Land Packages are subject to developer's design review panel final approval. Facade shown in image may not be included in package pricing. Please see your Sales Consultant for details. 1. Conditions apply. Please see sales consultant for details.
[†] Offer limited time only. See sales consultant for full details on all promotions. Places Homes reserves the right to change prices without notice.

Package pricing is based on a land value of: \$177,000

Effective 23.7.10